

High School Math © 2007

Test 1st 4

Presentation Book

↗ **Textbook** ↘
↙ **Workbook** ↘

Answer Key

BLMs

Mastery Test 4—

Follows Lesson 45

EXERCISE 1 TEST 4

Workbook and Textbook

TPB

Note: Students are not to use a calculator for any part of the test.

Note: Students are not to use a calculator for any part of the test.

- Open your workbook to test 4 at the end of your workbook. Find part 1. ✓
- This is a test. You should have only your workbook, textbook, a sharpened pencil, and lined paper.
- Work parts 1 through 10. Raise your hand when you've completed part 10.

(Observe students but do **not** give feedback.)

Marking the Test

- a. (Collect the papers. Use the *Answer Key* to score the tests. Award scores as follows:)

TEST 4 PERCENT SUMMARY					
SCORE	%	SCORE	%	SCORE	%
51	100	45	88	39	76
50	98	44	86	38	75
49	96	43	84	37	73
48	94	42	82	36	71
47	92	41	80		
46	90	40	78		

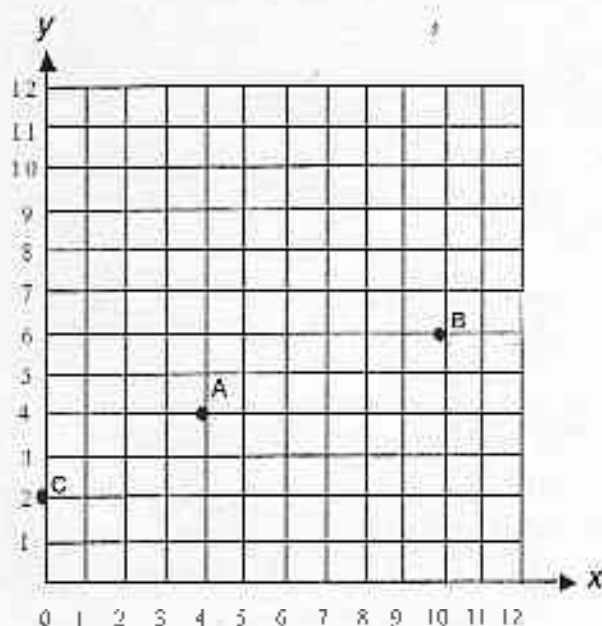
78

- b. (Complete the Test 4 Remedy Summary to determine whether remedies are needed. Reproducible Summary Sheets are at the back of the *Teacher's Guide*.)
- (If more than 1/4 of the students did not pass a test part, present the remedy for that part before beginning lesson 46. Remedies appear at the end of the Test 4 Answer Key.)

Mastery Test 4 Workbook cont.

Part 3

Write the description for points A–C.
Plot points D–F on the coordinate system.



- A
- B
- C
- D (12, 0)
- E (3, 2)
- F (0, 7)

Part 4

For each table, figure out the correct function. Complete the table.

	Function	
①	x	$= y$
②	x	$= y$
	9	3
	3	1
③	6	
④	24	

	Function	
⑤	x	$= y$
⑥	x	$= y$
	4	8
	2	6
⑦	3	
⑧	0	

This test is continued in the textbook, page T-8.

Mastery Test 4—Follows Lesson 45
Textbook

Part 5

Write each fraction as a division problem. Then work the problem.

a. $\frac{.27}{.09}$

b. $\frac{7.26}{.3}$

c. $\frac{252}{.07}$

d. $\frac{50.5}{.005}$

Part 6

Work each problem.

- A baker makes sourdough and whole-wheat bread every day. Yesterday she baked 125 loaves of bread. If she baked 98 loaves of whole-wheat, ~~how~~ many loaves of sourdough did she bake?
- There are 3 books for every 2 magazines. If there are 24 books, how many magazines are there?
- 97 of the 112 auction items have been sold. How many items have not been sold?
- To make cookies, Megan needs 4 cups of sugar to every 2 tablespoons of butter. If she uses 8 tablespoons of butter, how many cups of sugar does she use?
- The ratio of dirty spoons to clean ones is 5 to 9. If 90 spoons are dirty, how many are clean?

Part 7

Copy and work each problem. *Round your answers to hundredths.*

a. $.09 \overline{) .42}$

b. $.4 \overline{) .74}$

c. $.7 \overline{) 13.8}$

d. $.08 \overline{) .555}$

Part 8

Rewrite the first equation with a number for 1 of the letters. Then solve the problem.

a. $14 - 6k = 3n$

$k = \frac{1}{3}$

c. $3v + j = 18$

$v = 5$

b. $9z = 2m - 13$

$z = 3$

Mastery Test 4 Textbook cont.

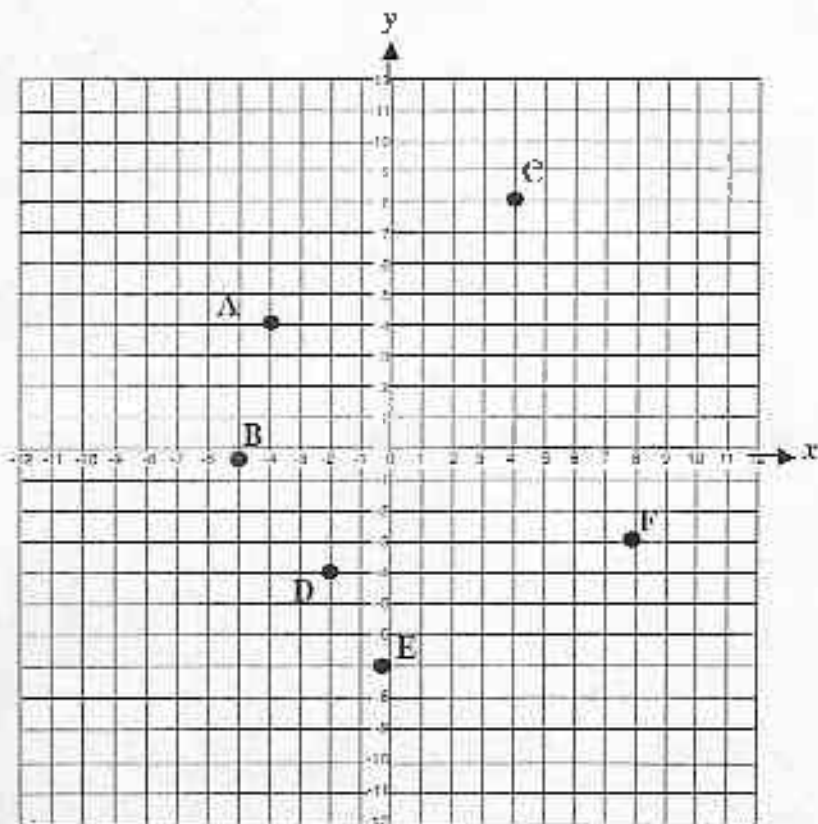
Part 9

Work each problem.

- The height of the tower is $\frac{3}{2}$ the height of the office building. The office building is 48 feet high. How tall is the tower?
- The watch costs \$83 less than the stereo. The watch costs \$61. How much is the stereo?
- The distance to the school is 2.5 times the distance to the gym. The distance to the gym is 3 miles. What is the distance to the school?
- Quarterback A threw 361 more yards than quarterback B. Quarterback B threw for 1008 yards. How many yards did quarterback A throw for?

Part 10

Write the coordinates for each point on your lined paper.



Answer Key

((Answer Key Book))
Mastery Test 4—Follows Lesson 45

TEST 4 PERCENT SUMMARY					
SCORE	%	SCORE	%	SCORE	%
51	100	45	88	39	76
50	98	44	86	38	75
49	96	43	84	37	73
48	94	42	82	36	71
47	92	41	80		
46	90	40	78		

TEST 4 SCORING CHART			
Part	Score	Possible Score	Passing Score
1	1 for each row 1 for each labeled point	6	6
2	1 for each item	3	3
3	1 for each description 1 for each point	6	5
4	1 for each row, 1-8	8	7
5	1 for each answer	4	3
6	1 for each item	5	4
7	1 for each item	4	3
8	1 for each item	3	3
9	1 for each item	4	3
10	1 for each item	6	5
TOTAL		51	

*insert key-part 1-10,
4th row stand
Kennedy Table*

Test 4

(Answer key follows key for part (b))

Key

my

Note: Provide any remedies for test 4 before beginning lesson 46. If more than 1/4 of the students did not pass a test part, present a remedy for that part. You are granted permission to reproduce the Remedy Summary Sheet and blackline masters (Test 4-BLM 1 and 2) at the back of the Teacher's Guide.

short review

Test 4 Remedies

Test 1	Lesson	Exercise	Textbook Part	Test 4 BLM
Part 1	37	2	3 and 4	Test 4-BLM 1
Part 2	44	5	2	-
Part 3	41	5	-	Test 4-BLM 1
Part 4	44	2	-	Test 4-BLM 2
Part 5	38	4	2	-
	40	2	2	-
Part 6	42	5	4	-
Part 7	43	5	3	-
Part 8	39	2	1	-
Part 9	40	1	1	-
Part 10	44	3	-	Test 4-BLM 2

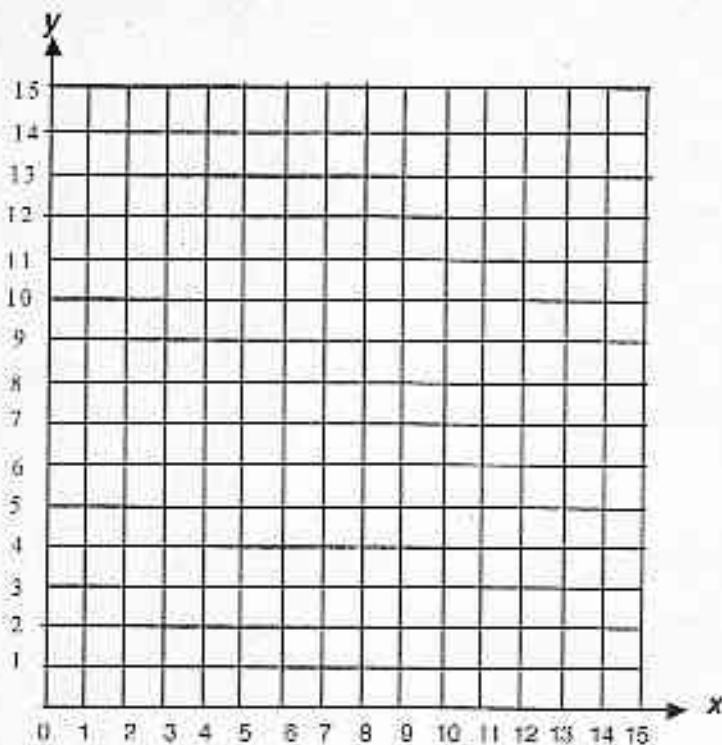
Lesson 37

Part 1

Complete the table. Then plot 3 points and draw the line.
Then plot the remaining points.

1 1 1 1 1

	Function	
	x	$+ 3 = y$
A	8	
B	9	
C	0	
D	2	
E	7	
F	4	

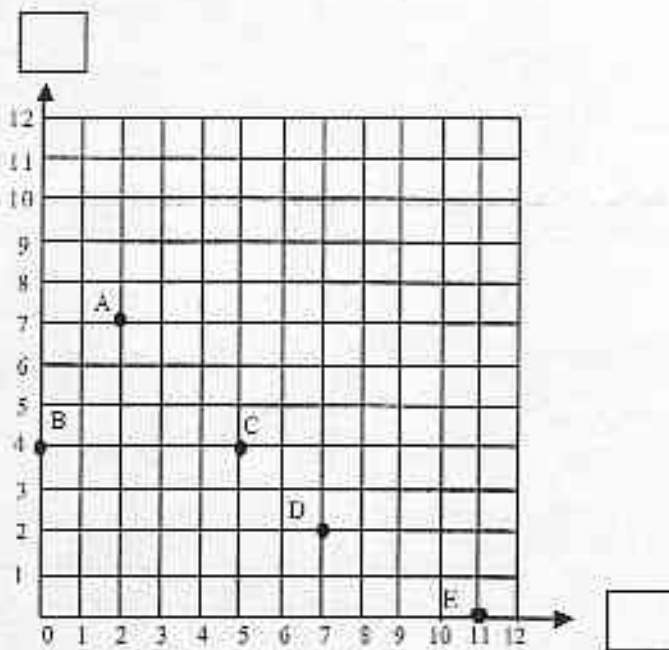


Lesson 41

Part 2

Label the axes. Write the description for points A-B.
Plot points F-J on the coordinate system.

and



- F (7, 11)
- G (2, 5)
- H (0, 9)
- I (12, 1)
- J (3, 0)

Lesson 44
Part 2

Complete each function table.

a.

Function	
x	$= y$
x	$= y$
7	4
14	11
3	
6	
10	

b.

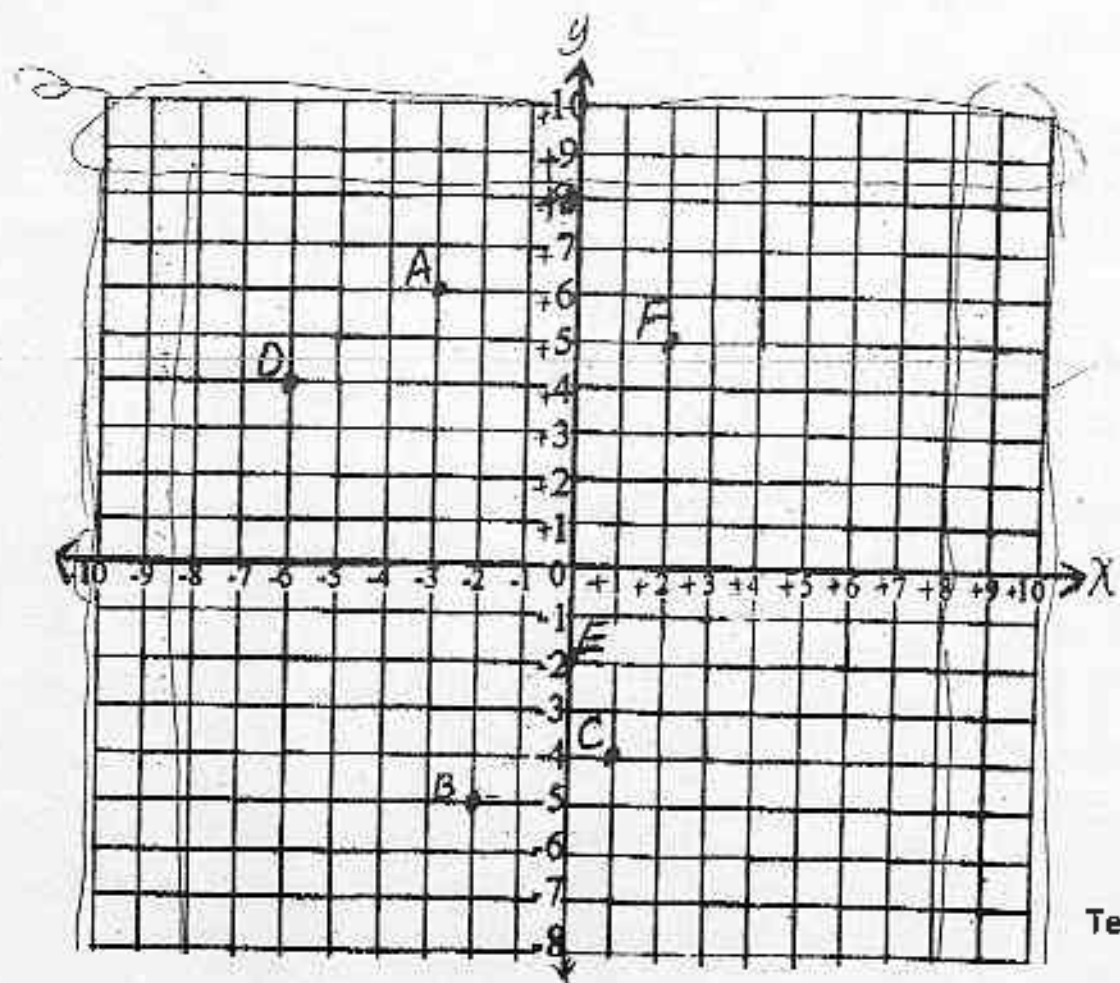
Function	
x	$= y$
x	$= y$
2	8
5	20
3	
1	
6	

c.

Function	
x	$= y$
x	$= y$
8	10
4	5
12	
16	
0	

Lesson 44
Part 3

Write the coordinates next to each point. You do not need a plus sign for positive x or y values.



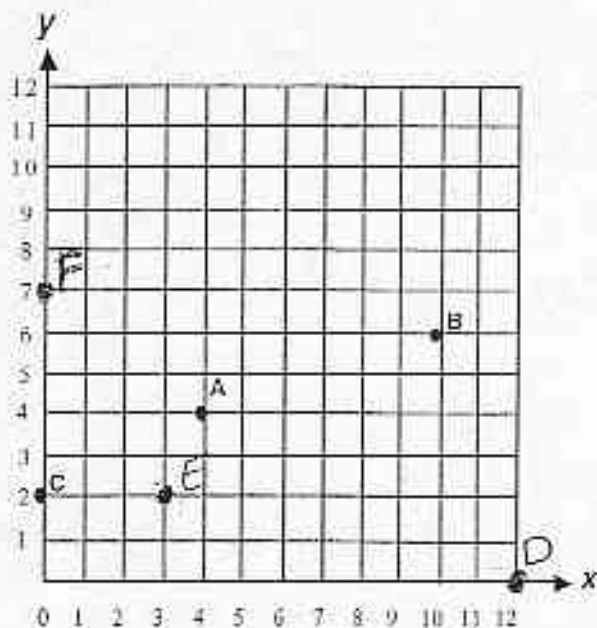
Test 4-BLM 2

© SRA Permisson to reproduce for classroom use.

Mastery Test 4 Workbook cont.

Part 3

Write the description for points A-C.
Plot points D-F on the coordinate system.



A (4, 4)

B (10, 6)

C (0, 2)

D (12, 0)

E (3, 2)

F (0, 7)

Part 4

For each table, figure out the correct function. Complete the table.

	Function	
① [10/2]	$x \left(\frac{1}{3}\right) = y$	
② [10/4]	$x - 4 = y$	
	9 $\left(\frac{1}{3}\right)$	3
	3 $\left(\frac{1}{3}\right)$	1
③	6 $\left(\frac{1}{3}\right)$	2
④	24 $\left(\frac{1}{3}\right)$	8

	Function	
⑤ [10/6]	$x - 2 = y$	
⑥ [10/5]	$x + 4 = y$	
	4 + 4	8
	2 + 4	6
⑦	3 + 4	7
⑧	0 + 4	4

accuracy
note ④
not [10/2]
up
anno
also 10 pt

ANSWER KEY
Mastery Test 4
[Part 8]

Textbook

$$\begin{aligned} \text{a. } 14 - 6\left(\frac{1}{3}\right) &= 3n \\ 14 - 2 &= 3n \\ \left(\frac{1}{3}\right)12 &= 3n\left(\frac{1}{3}\right) \\ \boxed{4} &= n \end{aligned}$$

$$\begin{aligned} \text{b. } 9(3) &= 2m - 13 \\ 27 &= 2m - 13 \\ +13 & \quad +13 \\ \hline \left(\frac{1}{2}\right)40 &= 2m\left(\frac{1}{2}\right) \\ \boxed{20} &= m \end{aligned}$$

$$\begin{aligned} \text{c. } 3(5) + j &= 18 \\ 15 + j &= 18 \\ -15 & \quad -15 \\ \hline \boxed{j} &= 3 \end{aligned}$$

[Part 9]

$$\begin{aligned} \text{a. } t &= \frac{3}{2}0 \quad \boxed{n=48} \\ t &= \frac{3}{2}(48) \\ t &= 72 \\ \boxed{72 \text{ feet}} \end{aligned}$$

$$\begin{aligned} \text{c. } s &= 2.5g \quad \boxed{g=3} \\ s &= 2.5(3) \\ s &= 7.5 \\ \boxed{7.5 \text{ miles}} \end{aligned}$$

$$\begin{aligned} \text{b. } w &= s - 83 \\ 61 &= s - 83 \\ +83 & \quad +83 \\ \hline 144 &= s \\ \boxed{\$144} \end{aligned}$$

$$\begin{aligned} \text{d. } A &= B + 361 \quad \boxed{B=1008} \\ A &= 1008 + 361 \\ A &= 1369 \\ \boxed{1369 \text{ yards}} \end{aligned}$$

[Part 10]

- | | |
|-----------|------------|
| A (-4, 4) | D (-2, -4) |
| B (-5, 0) | E (0, -7) |
| C (4, 8) | F (8, -3) |